



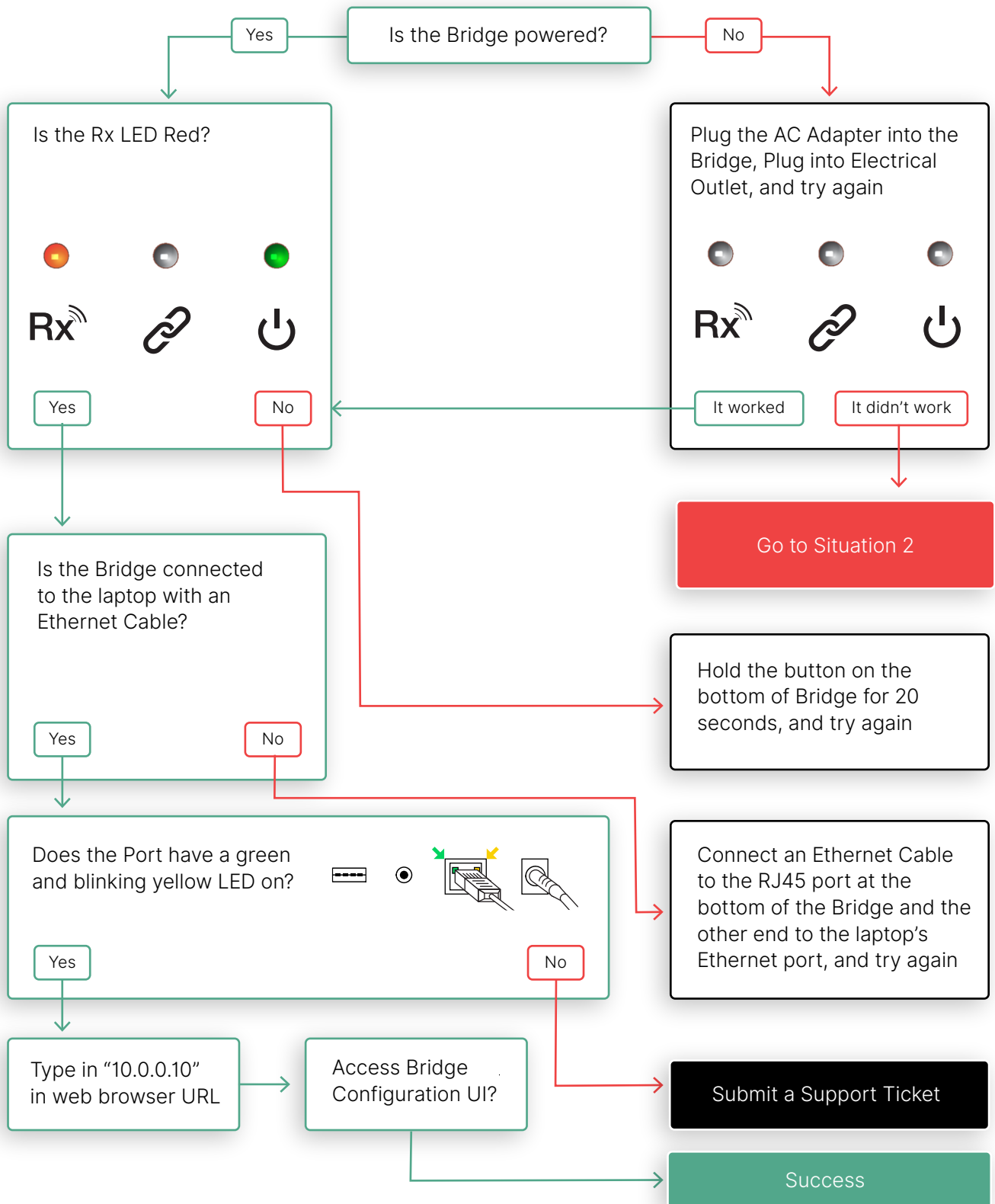
**PANORAMIC POWER**  
TROUBLESHOOTING GUIDES

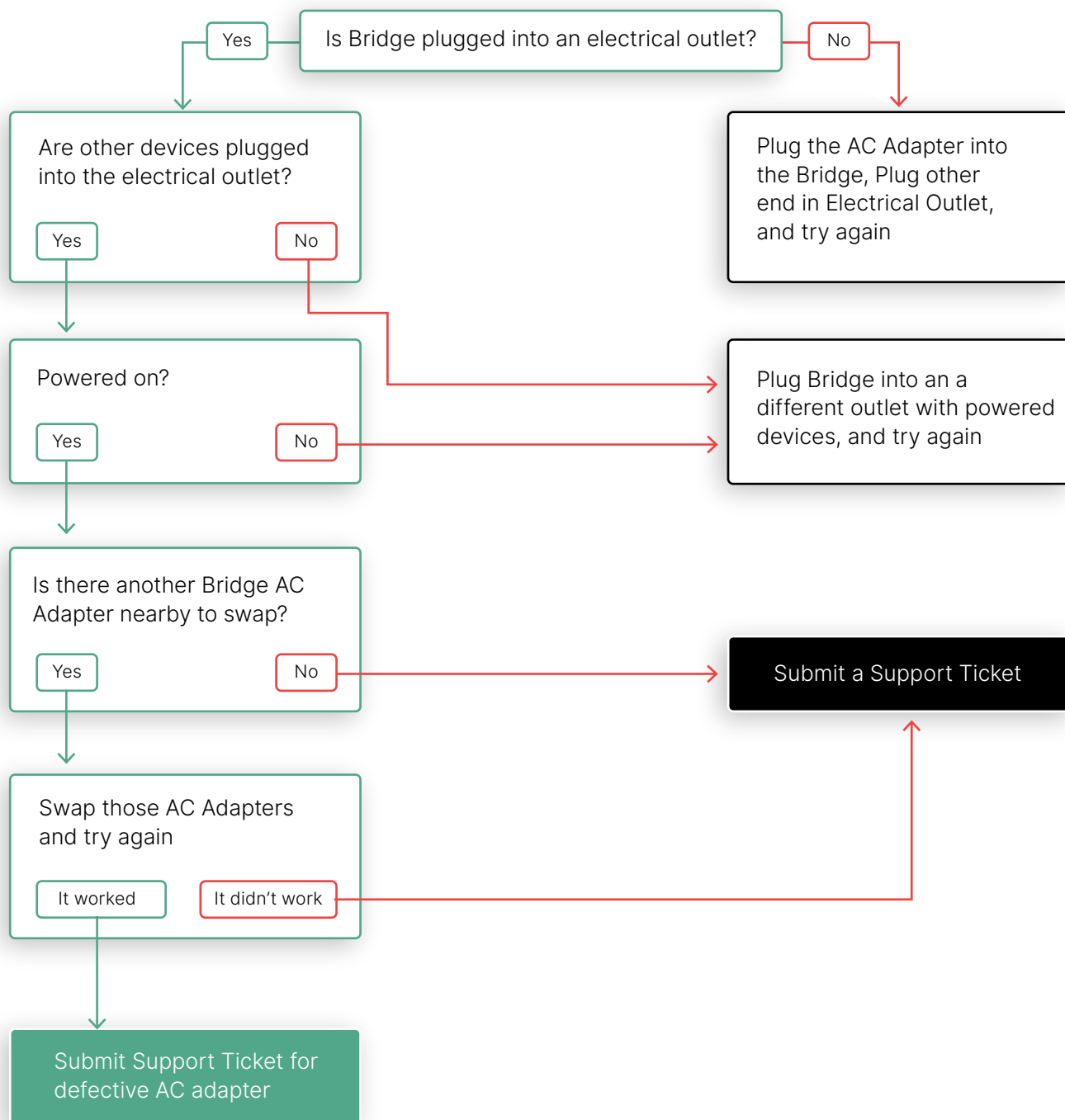
# BRIDGES



SITUATION 1:

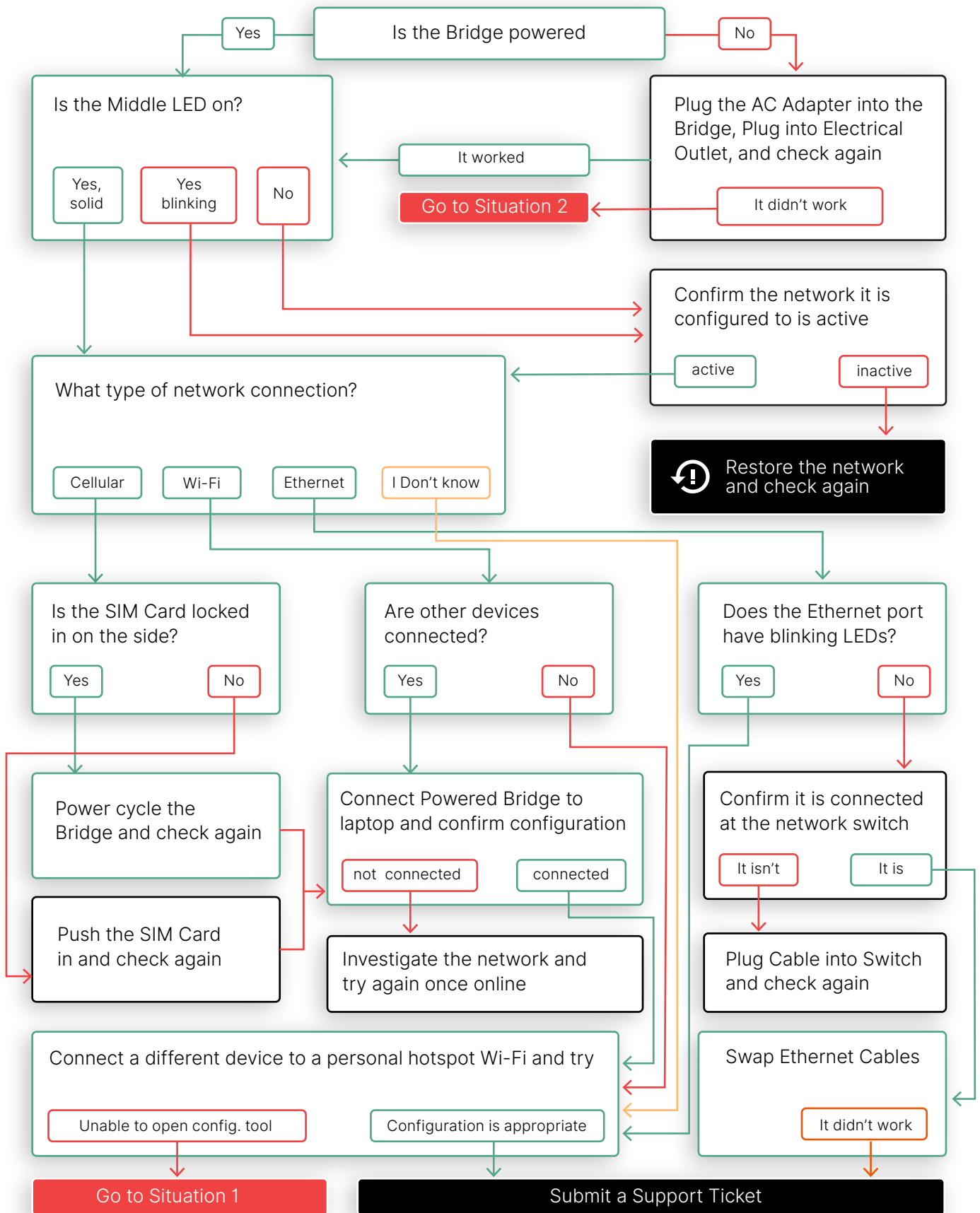
# Not able to access Bridge Configuration UI





**SITUATION 3:**

# Bridge disconnected from the platform



\* For Ethernet/Wi-Fi Bridges, make sure Port 443 is open bi-directionally and that the URL bridges.powerradar.energy is accessible on the network